



The Cement-Based Allegro Alternative

Allegro is a cement-based product similar to stucco. As it cures, it forms a chemical matrix that grows through any alkaline deposits and mechanically attaches itself to the stucco. The result is the creation of a continuous, concrete-based cladding with numerous advantages for both applicator and homeowner.

- Allegro is available in a wide range of colors, including deeper hues than traditional stucco colors.
- Allegro won't bridge over existing stucco textures, so it retains their original appearance.
- Allegro can be applied over any texture, including dense surfaces like the smooth Santa Barbara Mission Finish.
- Cost-effective to use, Allegro can be mixed on-site in exactly the amount needed, with 1 pound covering 36 square feet.
- Allegro is less expensive than an elastomeric coating or paint designed for use over a paint-grade stucco finish.
- Allegro will not sag when applied correctly with a garden sprayer, airless paint sprayer, paint roller, or brush.
- Allegro cures well in humid conditions and can be exposed to rain sooner after application than paint.

When You're in the Know, You'll Go with Allegro

For more information about recoating your stucco-clad home, contact your local authorized LaHabra distributor. As a representative for one of the world's largest and most experienced stucco manufacturers, they're your best source for getting the job done right.

Tip

For the best results always apply Allegro end-to-end and top to bottom or to a prominent architectural break.

Allegro is not recommended for spot touch ups on any material other than Allegro.



Corporate Office

ParexLahabra, Inc.
 4125 E. La Palma Ave., Suite 250
 Anaheim, CA 92807
 Phone: 1-877-LHSTUCCO
 Fax: 714-774-2079
 Email: info@lahabrastucco.com
lahabrastucco.com

Sales Offices & Warehouses

Anaheim
 4130 E. La Palma Ave.
 Anaheim, CA 92807
 Phone: 714-774-1186
 Fax: 714-774-8599

Riverside
 2150 Eastridge Ave.
 Riverside, CA 92507
 Phone: 951-653-3549
 Fax: 951-653-8189

North Hollywood
 8161 Lankershim Blvd.
 North Hollywood, CA
 91605-1611
 Phone: 818-504-9180
 Fax: 818-504-1985

Northern California
 11290 South Vallejo Court
 French Camp, CA 95231
 Phone: 209-983-8808
 Fax: 209-983-8873

Redan
 1870 Stone Mt.-
 Lithonia Rd.
 Redan, GA 30074
 Phone: 770-482-7872
 Fax: 770-482-6878

LaHabra and ParexLahabra are registered trademarks of ParexLahabra, Inc.

© 2006, ParexLahabra, Inc. LALCT 10/06



Don't Paint Stucco...
 Refresh with Allegro



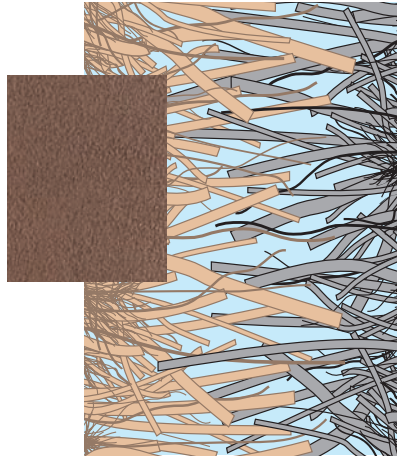
Allegro



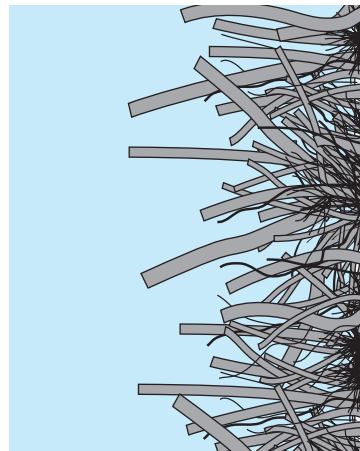
Allegro

Paint vs. a Cement-Based Coating

Paint is often seen as a convenient and cost-effective way to freshen up the appearance or change the color of stucco. Unfortunately, the incorrect paint can damage the natural properties of stucco that make it an ideal exterior cladding. To understand why this happens, it's helpful to know how stucco contributes to a structure's weather resistance, and how coatings like paint or a cement-based product like Allegro will affect this ability.



Allegro fuses with the cement instead of simply adhering to the stucco surface like paint.



The interlocking structure of stucco at a microscopic level makes it breathable.

How Stucco Works

Traditional stucco is made from portland cement, which is also used to build roads, bridges, and block walls. When mixed with aggregate and water, stucco undergoes a chemical reaction, creating

interlocking microscopic crystals that form a vapor permeable structure. As a result, stucco is both drainable and breathable.

Protecting the Weather Barrier

Construction codes require that a weather-resistant barrier be built over exterior walls to protect them from moisture. Stucco is a cement-based material applied over this barrier to give it an attractive, durable finish without affecting its weather-resistance qualities.

Water that gets behind stucco through gaps between windows and doors stops at the weather-resistive barrier and runs down the wall, draining through perforated metal flashings called weep screeds. Because stucco is highly breathable, any moisture that doesn't drain quickly escapes from the wall in the form of vapor through stucco's porous crystals.

How Allegro Works With Your Stucco

Because of its unique formulation, Allegro not only allows stucco to breathe, it also allows it to continue hydrating, gaining strength over time and adding performance over its lifetime.

And, unlike paint, Allegro makes it easy to recoat with traditional stucco if you want to change the decorative texture of your home.

What Stucco Does to Paint

Stucco is not very paint-friendly, either. If the PH of the stucco is too high when the paint is applied, or if the stucco is not fully cured over time, stucco may erode the bonds that hold the paint to it, and alkaline salts that accumulate on its surface reduce the area for paint to adhere to it in the first place.



Durable and attractive, Allegro is cost-effective and easy to apply over stucco cladding.

Flaking and fading can also result from exposure to sunlight and temperature changes that break down the paint's pigment and wall-bonding properties.